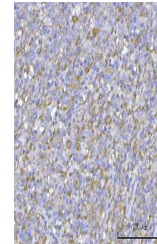


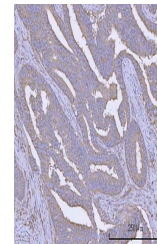
Product Datasheet

PACSIN2 Antibody (orb1676243)

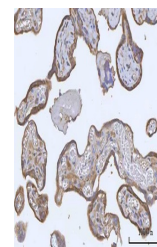
| | |
|----------------------------|--|
| Description | PACSIN2 Antibody |
| Species/Host | Rabbit |
| Reactivity | Human, Monkey, Mouse, Rat |
| Conjugation | Unconjugated |
| Tested Applications | ELISA, FC, ICC, IF, IHC, WB |
| Immunogen | E.coli-derived human PACSIN2 recombinant protein (Position: M84-D397). |
| Form/Appearance | Lyophilized |
| Concentration | Adding 0.2 ml of distilled water will yield a concentration of 500 µg/ml. |
| Storage | At -20°C for one year from date of receipt. After reconstitution, at 4°C for one month. It can also be aliquotted and stored frozen at -20°C for six months. Avoid repeated freezing and thawing. |
| Note | For research use only |
| Application notes | Tested Species: In-house tested species with positive results. Other applications have not been tested. Optimal dilutions should be determined by end users. Adding 0.2 ml of distilled water will yield a concentration of 500 µg/ml. |
| Clonality | Polyclonal |
| MW | 60 kDa |
| Uniprot ID | Q9UNF0 |
| Expiration Date | 12 months from date of receipt. |



IHC analysis of PACSIN2 using anti-PACSI...



IHC analysis of PACSIN2 using anti-PACSI...



IHC analysis of PACSIN2 using anti-PACSI...