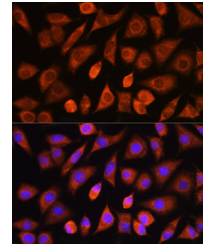


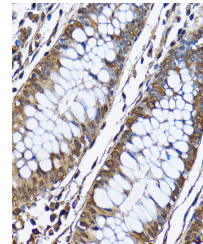
Product Datasheet

PHD2/EGLN1 Rabbit Antibody (orb1676193)

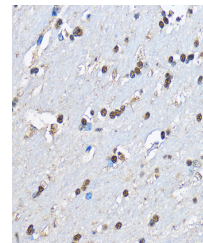
Description	PHD2/EGLN1 Rabbit Antibody
Species/Host	Rabbit
Reactivity	Human, Mouse, Rat
Conjugation	Unconjugated
Tested Applications	ELISA, IF, IHC-P, WB
Immunogen	Recombinant fusion protein containing a sequence corresponding to amino acids 1-426 of human PHD2/EGLN1 (NP_071334.1).
Preservatives	PBS with 0.01% thimerosal, 50% glycerol, pH 7.3.
Storage	Maintain refrigerated at 2-8°C for up to 2 weeks. For long term storage store at -20°C in small aliquots to prevent freeze-thaw cycles.
Note	For research use only
Isotype	IgG
Clonality	Polyclonal
MW	45kDa
Uniprot ID	Q9GZT9
Dilution Range	WB, 1:500 - 1:2000 IHC-P, 1:50 - 1:100 IF/ICC, 1:50 - 1:200
Expiration Date	12 months from date of receipt.



Immunofluorescence analysis of L929 cell...



Immunohistochemistry analysis of paraffi...



Immunohistochemistry analysis of paraffi...