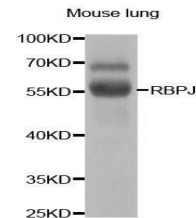


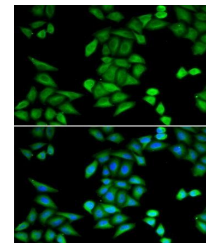
Product Datasheet

RBPJ antibody (orb167507)

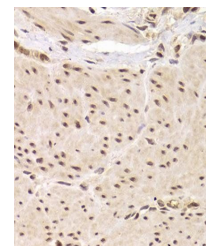
Description	Rabbit polyclonal antibody to RBPJ
Reactivity	Human, Mouse, Rat
Conjugation	Unconjugated
Tested Applications	IHC, WB
Immunogen	Recombinant fusion protein of human RBPJ(KK(NP_976028.1)).
Preservatives	PBS with 0.02% sodium azide,50% glycerol,pH7.3.
Concentration	1 mg/ml
Storage	Maintain refrigerated at 2-8°C for up to 2 weeks. For long term storage store at -20°C in small aliquots to prevent freeze-thaw cycles.
Note	For research use only
Isotype	IgG
Clonality	Polyclonal
MW	61KDa
Uniprot ID	Q06330
Dilution Range	WB: 1:500-2000, IHC-P: 1:50-200, IF/ICC: 1:20-50
Expiration Date	12 months from date of receipt.



Western blot analysis of extracts of mou...



Immunofluorescence analysis of MCF-7 cel...



Immunohistochemical staining of human ga...