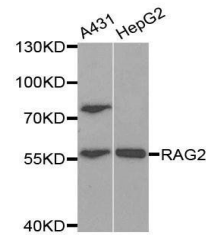


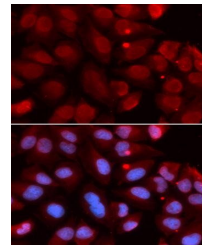
Product Datasheet

RAG2 antibody (orb167458)

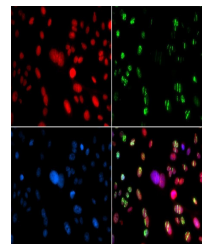
Description	Rabbit polyclonal antibody to RAG2
Species/Host	Rabbit
Reactivity	Human, Mouse, Rat
Conjugation	Unconjugated
Tested Applications	WB
Immunogen	Recombinant fusion protein of human RAG2 (NP_001230715.1).
Preservatives	Buffer: PBS with 0.02% sodium azide, 50% glycerol, pH7.3.
Concentration	1 mg/ml
Storage	Store at -20°C. Avoid freeze / thaw cycles.
Note	For research use only
Isotype	IgG
Clonality	Polyclonal
Purity	Affinity purification
MW	59kDa
Uniprot ID	P55895
Entrez	5897
Dilution Range	WB: 1:500-2000, IHC-P: 1:50-200, IF/ICC: 1:50-200
Expiration Date	12 months from date of receipt.



Western blot analysis of extracts of var...



Immunofluorescence analysis of U2OS cell...



Immunofluorescence analysis of U2OS cell...