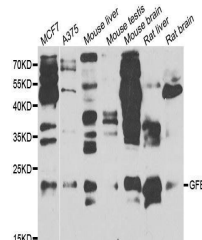


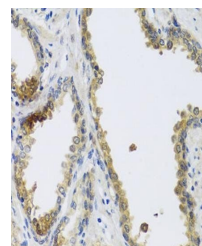
Product Datasheet

GFER antibody (orb167369)

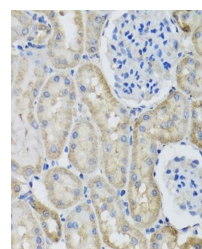
Description	Rabbit polyclonal antibody to GFER
Species/Host	Rabbit
Reactivity	Human, Mouse, Rat
Conjugation	Unconjugated
Tested Applications	ELISA, IHC-P, WB
Immunogen	Recombinant fusion protein containing a sequence corresponding to amino acids 81-205 of human GFER (NP_005253.3).
Preservatives	PBS with 0.02% sodium azide, 50% glycerol, pH 7.3.
Concentration	1 mg/ml
Storage	Maintain refrigerated at 2-8°C for up to 2 weeks. For long term storage store at -20°C in small aliquots to prevent freeze-thaw cycles.
Note	For research use only
Isotype	IgG
Clonality	Polyclonal
MW	23kDa
Uniprot ID	P55789
Dilution Range	WB: 1:500-2000, IHC-P: 1:50-200
Expiration Date	12 months from date of receipt.



Western blot analysis of extracts of var...



Immunohistochemical staining of mouse ki...



Immunohistochemical staining of mouse st...