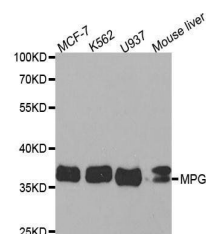


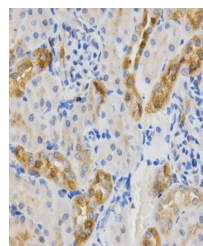
Product Datasheet

MPG antibody (orb167324)

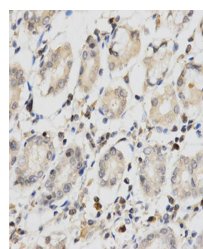
Description	Rabbit polyclonal antibody to MPG
Reactivity	Human, Mouse
Conjugation	Unconjugated
Tested Applications	ICC, IF, WB
Immunogen	Recombinant fusion protein of human MPG(NP_001015052.1).
Preservatives	PBS with 0.02% sodium azide,50% glycerol,pH7.3.
Concentration	1 mg/ml
Storage	Maintain refrigerated at 2-8°C for up to 2 weeks. For long term storage store at -20°C in small aliquots to prevent freeze-thaw cycles.
Note	For research use only
Isotype	IgG
Clonality	Polyclonal
MW	37kDa
Uniprot ID	P29372
Dilution Range	WB: 1:500-2000, IHC-P: 1:50-200, IF/ICC: 1:50-100, IP: 1:50-100
Expiration Date	12 months from date of receipt.



Western blot analysis of extracts of var...



IHC-P staining of human stomach tissue u...



Immunohistochemical analysis of formalin...