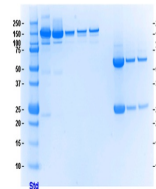


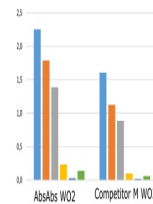
Product Datasheet

FOXL2 Antibody (orb1672115)

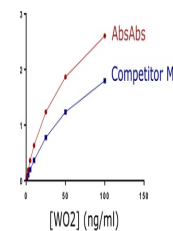
Description	FOXL2 Antibody
Reactivity	Human
Conjugation	Unconjugated
Tested Applications	ELISA, IHC-P, WB
Immunogen	Synthetic peptides, corresponding to amino acids 1-42 of human beta amyloid, conjugated to KLH.
Target	FOXL2
Preservatives	PBS with 0.02% Proclin 300.
Concentration	batch dependent
Storage	Store at 4°C for up to 3 months. For longer storage, aliquot and store at -20°C.
Note	For research use only
Isotype	IgG2a kappa
Clonality	Recombinant
Uniprot ID	P05067
Expiration Date	12 months from date of receipt.



Comparison of recombinant WO2 anti-Amylo...



Comparison of recombinant WO2 anti-Amylo...



Comparison of recombinant WO2 anti-Amylo...