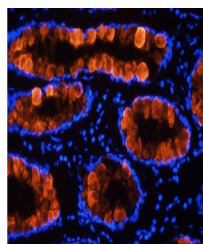


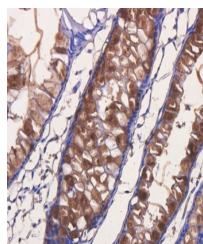
Product Datasheet

Tumor associated glycoprotein (TAG) 72 Antibody [B72.3 (Satumomab)], Mouse IgG1 - Research Grade Biosimilar (orb1672106)

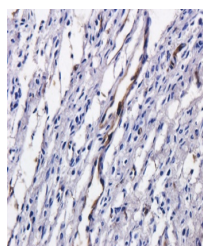
Description	Tumor associated glycoprotein (TAG) 72 Antibody [B72.3 (Satumomab)], Mouse IgG1 - Research Grade Bio...
Reactivity	Human
Conjugation	Unconjugated
Tested Applications	FC, IHC
Immunogen	Tumour-associated glycoprotein 72 is a glycoprotein found on the surface of many cancer cells, including ovary, breast, colon, and pancreatic cells.
Preservatives	PBS with 0.02% Proclin 300.
Concentration	batch dependent
Storage	Store at 4°C for up to 3 months. For longer storage, aliquot and store at -20°C.
Note	For research use only
Isotype	IgG1 kappa
Clonality	Recombinant
Expiration Date	12 months from date of receipt.



Immunofluorescent staining of human rect...



Immunohistochemical staining of human re...



Immunohistochemical staining of human ov...