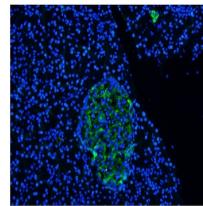


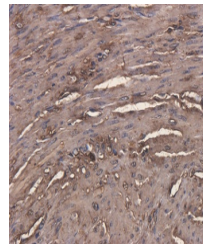
Product Datasheet

carcinoembryonic antigen (CEA) Antibody [Arcitumomab], Human IgG1 - Research Grade Biosimilar (orb1672104)

Description	carcinoembryonic antigen (CEA) Antibody [Arcitumomab], Human IgG1 - Research Grade Biosimilar
Reactivity	Human
Conjugation	Unconjugated
Tested Applications	FC, IHC-P
Immunogen	Carcinoembryonic antigen (CEA) describes a set of highly related glycoproteins involved in cell adhesion normally produced in gastrointestinal tissue during fetal development, but only at very low levels in adults.
Preservatives	PBS with 0.02% Proclin 300.
Concentration	batch dependent
Storage	Store at 4°C for up to 3 months. For longer storage, aliquot and store at -20°C.
Note	For research use only
Isotype	IgG1 kappa
Clonality	Recombinant
Uniprot ID	Q13984
Expiration Date	12 months from date of receipt.



Immunofluorescent staining of rat pancre...



Immunohistochemical staining of human en...