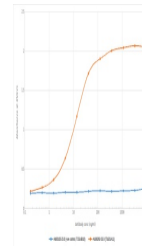


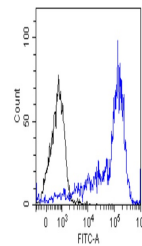
## Product Datasheet

### IgM Antibody [M15/8], Rabbit IgG (orb1672085)

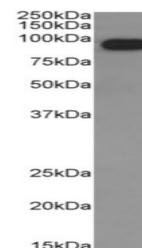
<b>Description</b>	IgM Antibody [M15/8], Rabbit IgG
<b>Reactivity</b>	Human
<b>Conjugation</b>	Unconjugated
<b>Tested Applications</b>	Blocking, ELISA, FC, IHC-Fr, IP
<b>Immunogen</b>	BALB/c mice immunized with human IgM.
<b>Preservatives</b>	PBS with 0.02% Proclin 300.
<b>Concentration</b>	batch dependent
<b>Storage</b>	Store at 4°C for up to 3 months. For longer storage, aliquot and store at -20°C.
<b>Note</b>	For research use only
<b>Isotype</b>	IgG kappa
<b>Clonality</b>	Recombinant
<b>Uniprot ID</b>	<b>P01871</b>
<b>Expiration Date</b>	12 months from date of receipt.



ELISA of anti-IgM antibody on IgM Fc reg...



Flow-cytometry using the anti-IgM M15/8....



Western Blot using anti-IgM antibody M15...