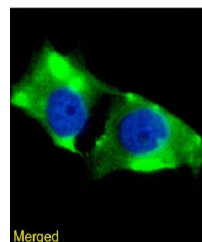


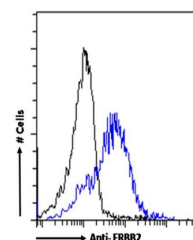
Product Datasheet

ERBB2 Antibody (orb1672075)

Description	ERBB2 Antibody
Reactivity	Human
Conjugation	Unconjugated
Tested Applications	ELISA, WB
Immunogen	Peptide "GLQSLPTHDPSP LQR" derived from the receptor tyrosine kinase erbB2 conjugated to KLH.
Target	ERBB2
Preservatives	PBS with 0.02% Proclin 300.
Concentration	batch dependent
Storage	Store at 4°C for up to 3 months. For longer storage, aliquot and store at -20°C.
Note	For research use only
Isotype	IgG kappa
Clonality	Recombinant
Uniprot ID	P04626
Expiration Date	12 months from date of receipt.



Immunofluorescence staining of MCF7 cell...



Flow-cytometry using the anti-ERBB2 anti...