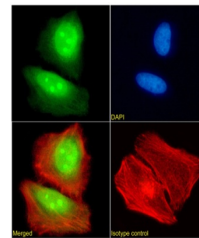


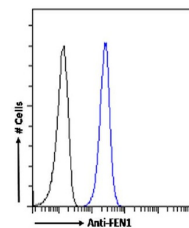
Product Datasheet

FEN1 Antibody (orb1672068)

Description	FEN1 Antibody
Reactivity	Human
Conjugation	Unconjugated
Immunogen	The KLH-cojugated peptide "SIEEIVR", derived from the Flap endonuclease 1 involved in DNA replication and repair.
Target	FEN1
Preservatives	PBS with 0.02% Proclin 300.
Concentration	batch dependent
Storage	Store at 4°C for up to 3 months. For longer storage, aliquot and store at -20°C.
Note	For research use only
Isotype	IgG kappa
Clonality	Recombinant
Uniprot ID	P39748
Expiration Date	12 months from date of receipt.



Immunofluorescence staining of HeLa cell...



Flow cytometry using the Anti-FEN1 antib...



Western Blot using anti-FEN1 antibody SA...