

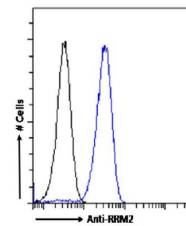
## Product Datasheet

### RRM2 Antibody (orb1672054)

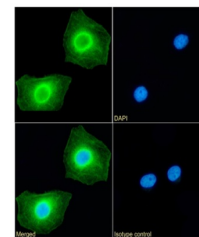
<b>Description</b>	RRM2 Antibody
<b>Reactivity</b>	Human
<b>Conjugation</b>	Unconjugated
<b>Tested Applications</b>	ELISA, WB
<b>Immunogen</b>	The KLH-conjugated peptide "IEQEFLTEALPVK" derived from Ribonucleoside-diphosphate reductase subunit M2 (RRM2). RRM2 provides precursors required for DNA synthesis.
<b>Target</b>	RRM2
<b>Preservatives</b>	PBS with 0.02% Proclin 300.
<b>Concentration</b>	batch dependent
<b>Storage</b>	Store at 4°C for up to 3 months. For longer storage, aliquot and store at -20°C.
<b>Note</b>	For research use only
<b>Isotype</b>	IgG kappa
<b>Clonality</b>	Recombinant
<b>Uniprot ID</b>	<b>P31350</b>
<b>Expiration Date</b>	12 months from date of receipt.



Western Blot using anti-RRM2 antibody SA...



Flow cytometry using the Anti-RRM2 antib...



Immunofluorescence staining of HeLa cell...