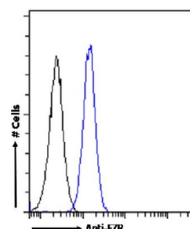


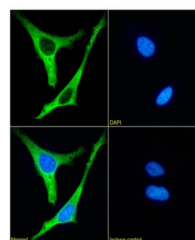
Product Datasheet

EZR Antibody (orb1672047)

Description	EZR Antibody
Reactivity	Human
Conjugation	Unconjugated
Tested Applications	WB
Immunogen	The KLH-conjugated peptide "SGYLSSER" derived from Ezrin, a protein likely involved in connections of major cytoskeletal structures to the plasma membrane.
Target	EZR
Preservatives	PBS with 0.02% Proclin 300.
Concentration	batch dependent
Storage	Store at 4°C for up to 3 months. For longer storage, aliquot and store at -20°C.
Note	For research use only
Isotype	IgG kappa
Clonality	Recombinant
Uniprot ID	P15311
Expiration Date	12 months from date of receipt.



Flow cytometry using the Anti-EZR antibody...



Immunofluorescence staining of HeLa cell...