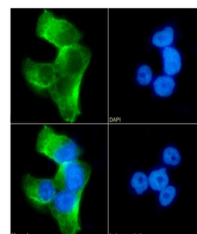


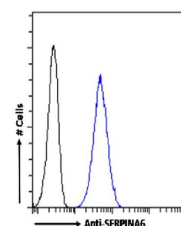
Product Datasheet

SERPINA6 Antibody (orb1672043)

Description	SERPINA6 Antibody
Reactivity	Human
Conjugation	Unconjugated
Tested Applications	WB
Immunogen	Peptide "AQLLQGLGFNLTER" derived from the Corticosteroid-binding globulin SERPINA6, conjugated to KLH.
Target	SERPINA6
Preservatives	PBS with 0.02% Proclin 300.
Concentration	batch dependent
Storage	Store at 4°C for up to 3 months. For longer storage, aliquot and store at -20°C.
Note	For research use only
Isotype	IgG kappa
Clonality	Recombinant
Uniprot ID	P08185
Expiration Date	12 months from date of receipt.



Immunofluorescence staining of HepG2 cel...



Flow cytometry using the Anti-SERPINA6 a...