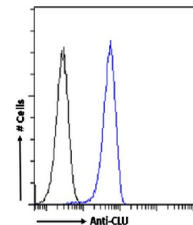


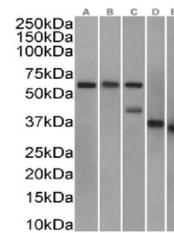
## Product Datasheet

### CLU Antibody (orb1672042)

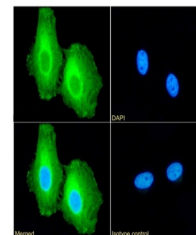
<b>Description</b>	CLU Antibody
<b>Reactivity</b>	Human
<b>Conjugation</b>	Unconjugated
<b>Tested Applications</b>	ELISA, WB
<b>Immunogen</b>	Peptide "ASSIIDELFQDR" derived from Clusterin conjugated to KLH. Clusterin isoform 1 functions as extracellular chaperone that prevents aggregation of nonnative proteins
<b>Target</b>	CLU
<b>Preservatives</b>	PBS with 0.02% Proclin 300.
<b>Concentration</b>	batch dependent
<b>Storage</b>	Store at 4°C for up to 3 months. For longer storage, aliquot and store at -20°C.
<b>Note</b>	For research use only
<b>Isotype</b>	IgG kappa
<b>Clonality</b>	Recombinant
<b>Uniprot ID</b>	<b>P10909</b>
<b>Expiration Date</b>	12 months from date of receipt.



Flow cytometry using the Anti-CLU antibody...



Western Blot using anti-CLU antibody SAI...



Immunofluorescence staining of HeLa cell...