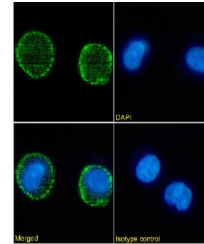


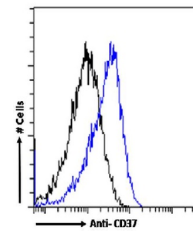
## Product Datasheet

### CD37 Antibody (orb1671907)

<b>Description</b>	CD37 Antibody
<b>Reactivity</b>	Human
<b>Conjugation</b>	Unconjugated
<b>Tested Applications</b>	FC, ICC, IF, IHC-P, WB
<b>Immunogen</b>	BALB/c mice were immunized with lymph node cells from a patient with nodular poorly differentiated lymphocytic lymphoma. Immunophenotyping studies of these cells identified them as B cells expressing SIgG/λ, as well as HLA-DR, Leu-12, and B1.
<b>Target</b>	CD37
<b>Preservatives</b>	PBS with 0.02% Proclin 300.
<b>Concentration</b>	batch dependent
<b>Storage</b>	Store at 4°C for up to 3 months. For longer storage, aliquot and store at -20°C.
<b>Note</b>	For research use only
<b>Isotype</b>	IgG1 kappa
<b>Clonality</b>	Recombinant
<b>Uniprot ID</b>	<b>P11049</b>
<b>Expiration Date</b>	12 months from date of receipt.



Immunofluorescence staining of Daudi cel...



Flow cytometry using the Anti-CD37 antib...