

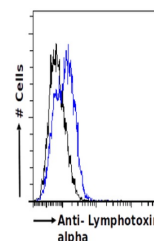
## Product Datasheet

### LTA Antibody (orb1671867)

<b>Description</b>	LTA Antibody
<b>Reactivity</b>	Human
<b>Conjugation</b>	Unconjugated
<b>Tested Applications</b>	ELISA, FC, NeA
<b>Immunogen</b>	3F12 was prepared by hyperimmunizing BALB/c mice with purified recombinant human LT $\alpha$ expressed in E. coli - the hybridoma clone was selected for its ability to bind LT $\alpha$ 3 by ELISA. The CDRs of the antibody were grafted to the framework regions of the mice mAb 2G7 to create the chimeric version of the antibody.
<b>Target</b>	LTA
<b>Preservatives</b>	PBS with 0.02% Proclin 300.
<b>Concentration</b>	batch dependent
<b>Storage</b>	Store at 4°C for up to 3 months. For longer storage, aliquot and store at -20°C.
<b>Note</b>	For research use only
<b>Isotype</b>	IgG kappa
<b>Clonality</b>	Recombinant
<b>Uniprot ID</b>	<b>P01374</b>
<b>Expiration Date</b>	12 months from date of receipt.



Western Blot using anti-Lymphotoxin alpha...



Flow-cytometry using the anti-Lymphotoxi...