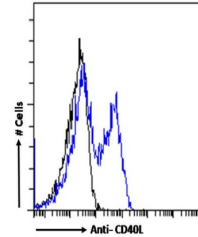


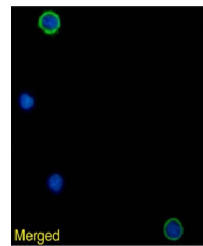
Product Datasheet

CD40L Antibody [AT161-8], Rabbit IgG (orb1671850)

Description	CD40L Antibody [AT161-8], Rabbit IgG
Reactivity	Human
Conjugation	Unconjugated
Tested Applications	FC, IF
Immunogen	This antibody was raised by immunising mice with Chinese hamster ovary (CHO) cells expressing human CD40L.
Preservatives	PBS with 0.02% Proclin 300.
Concentration	batch dependent
Storage	Store at 4°C for up to 3 months. For longer storage, aliquot and store at -20°C.
Note	For research use only
Isotype	IgG kappa
Clonality	Recombinant
Expiration Date	12 months from date of receipt.



Flow-cytometry using the anti-CD40L anti...



Immunofluorescence staining of human per...