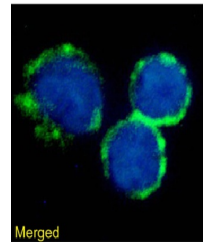


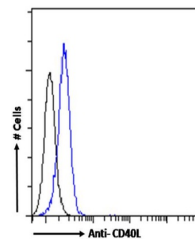
Product Datasheet

CD40L Antibody [AT161-10], Rabbit IgG (orb1671848)

Description	CD40L Antibody [AT161-10], Rabbit IgG
Reactivity	Human
Conjugation	Unconjugated
Tested Applications	ELISA
Immunogen	This antibody was raised by immunising mice with Chinese hamster ovary (CHO) cells expressing human CD40L.
Preservatives	PBS with 0.02% Proclin 300.
Concentration	batch dependent
Storage	Store at 4°C for up to 3 months. For longer storage, aliquot and store at -20°C.
Note	For research use only
Isotype	IgG kappa
Clonality	Recombinant
Expiration Date	12 months from date of receipt.



Immunofluorescence staining of human per...



Flow-cytometry using the anti-CD40L anti...