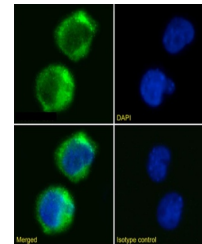


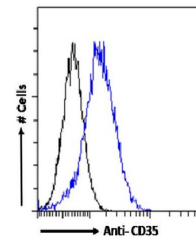
## Product Datasheet

### CR1 Antibody (orb1671822)

<b>Description</b>	CR1 Antibody
<b>Reactivity</b>	Human
<b>Conjugation</b>	Unconjugated
<b>Tested Applications</b>	FC
<b>Immunogen</b>	Animals were immunized with purified CR1 from human erythrocytes. Spleen cells were fused with P3X63Ag8.653 myeloma cells.
<b>Target</b>	CR1
<b>Preservatives</b>	PBS with 0.02% Proclin 300.
<b>Concentration</b>	batch dependent
<b>Storage</b>	Store at 4°C for up to 3 months. For longer storage, aliquot and store at -20°C.
<b>Note</b>	For research use only
<b>Isotype</b>	IgG kappa
<b>Clonality</b>	Recombinant
<b>Uniprot ID</b>	<b>P17927</b>
<b>Expiration Date</b>	12 months from date of receipt.



Immunofluorescence staining of Jurkat ce...



Flow-cytometry using the anti-CD35 antib...