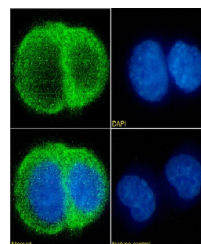


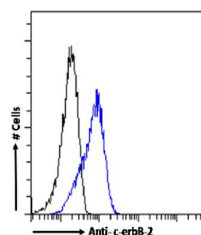
Product Datasheet

ERBB2 Antibody (orb1671728)

| | |
|----------------------------|---|
| Description | ERBB2 Antibody |
| Reactivity | Human |
| Conjugation | Unconjugated |
| Tested Applications | FC, IF, IP |
| Immunogen | 20x10 ⁶ SKBR3 human breast tumour cells were injected into BALB/c mice. The hybridomas generated from the mice spleen cells were then screen for antibodies reactive to c-erbB-2 using immunofluorescence and immunoprecipitation. |
| Target | ERBB2 |
| Preservatives | PBS with 0.02% Proclin 300. |
| Concentration | batch dependent |
| Storage | Store at 4°C for up to 3 months. For longer storage, aliquot and store at -20°C. |
| Note | For research use only |
| Isotype | IgG1 kappa |
| Clonality | Recombinant |
| Uniprot ID | P04626 |
| Expiration Date | 12 months from date of receipt. |



Immunofluorescence staining of MCF7 cell...



Flow cytometry using the Anti-c-erbB-2 a...