

Product Datasheet

H4 K8Ac; K12Ac; K16Ac Antibody [KM-2], Rabbit IgG (orb1671572)

Description H4 K8Ac; K12Ac; K16Ac Antibody [KM-2], Rabbit IgG

Reactivity Human

Conjugation Unconjugated

Tested Applications ELISA, IF, IHC, WB

Immunogen KM-2 antibody was derived from an MRL/lpr lupus mouse.

Preservatives PBS with 0.02% Proclin 300.

Concentration batch dependent

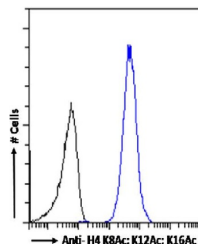
Storage Store at 4°C for up to 3 months. For longer storage, aliquot and store at -20°C.

Note For research use only

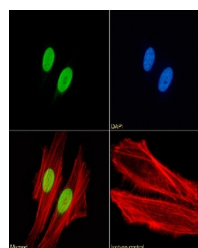
Isotype IgG kappa

Clonality Recombinant

Expiration Date 12 months from date of receipt.



Flow cytometry using the anti-H4 K8Ac; K...



Immunofluorescence staining of fixed HeL...