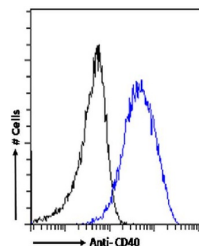


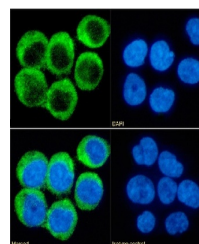
## Product Datasheet

### CD40LG Antibody (orb1671566)

<b>Description</b>	CD40LG Antibody
<b>Reactivity</b>	Human
<b>Conjugation</b>	Unconjugated
<b>Tested Applications</b>	Blocking
<b>Immunogen</b>	This antibody was generated by immunizing female BALB/c mice with a fusion protein containing extracellular domain of human CD40 fused to the hinge CH2 and CH3 domains of a murine IgG2b antibody.
<b>Target</b>	CD40LG
<b>Preservatives</b>	PBS with 0.02% Proclin 300.
<b>Concentration</b>	batch dependent
<b>Storage</b>	Store at 4°C for up to 3 months. For longer storage, aliquot and store at -20°C.
<b>Note</b>	For research use only
<b>Isotype</b>	IgG kappa
<b>Clonality</b>	Recombinant
<b>Uniprot ID</b>	<b>P29965</b>
<b>Expiration Date</b>	12 months from date of receipt.



Flow cytometry using the anti-CD40 antib...



Immunofluorescence staining of fixed Dau...