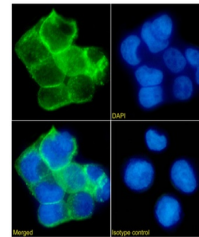


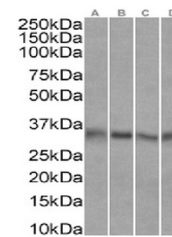
Product Datasheet

EPCAM Antibody (orb1671564)

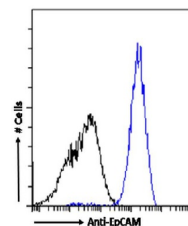
Description	EPCAM Antibody
Reactivity	Human
Conjugation	Unconjugated
Tested Applications	ELISA, FC
Immunogen	The original antibody was generated by immunizing BALB/c mice with human adenocarcinoma of the lung cell line UCLA P3.
Target	EPCAM
Preservatives	PBS with 0.02% Proclin 300.
Concentration	batch dependent
Storage	Store at 4°C for up to 3 months. For longer storage, aliquot and store at -20°C.
Note	For research use only
Isotype	IgG kappa
Clonality	Recombinant
Uniprot ID	P16422
Expiration Date	12 months from date of receipt.



Immunofluorescence staining of Caco-2 ce...



Western Blot using Anti-EpCAM antibody K...



Flow cytometry using the Anti-EpCAM anti...