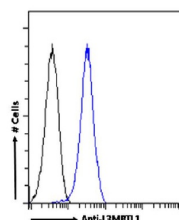


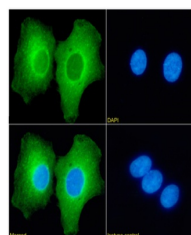
## Product Datasheet

### L3MBTL1 Antibody (orb1671537)

|                            |   |
|----------------------------|---|
| <b>Description</b>         | L3MBTL1 Antibody  |
| <b>Reactivity</b>          | Human   |
| <b>Conjugation</b>         | Unconjugated  |
| <b>Tested Applications</b> | ChIP, ELISA, FC, IF   |
| <b>Immunogen</b>           | This antibody was obtained by recombinant antibody (rAb) phage display recognizing L3MBTL1 protein under non-denaturing conditions. |
| <b>Target</b>              | L3MBTL1   |
| <b>Preservatives</b>       | PBS with 0.02% Proclin 300.   |
| <b>Concentration</b>       | batch dependent   |
| <b>Storage</b>             | Store at 4°C for up to 3 months. For longer storage, aliquot and store at -20°C.  |
| <b>Note</b>                | For research use only   |
| <b>Isotype</b>             | IgG kappa   |
| <b>Clonality</b>           | Recombinant   |
| <b>Uniprot ID</b>          | <a href="#">Q9Y468</a>  |
| <b>Expiration Date</b>     | 12 months from date of receipt.   |



Flow cytometry using the Anti-L3MBTL1 an...



Immunofluorescence staining of Kelly cel...