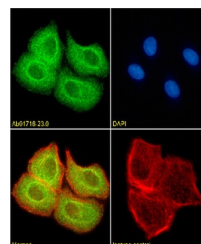


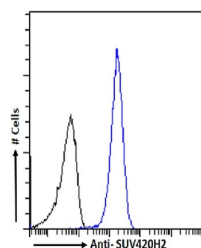
## Product Datasheet

### KMT5C Antibody (orb1671523)

<b>Description</b>	KMT5C Antibody
<b>Reactivity</b>	Human
<b>Conjugation</b>	Unconjugated
<b>Tested Applications</b>	ChIP, ELISA
<b>Immunogen</b>	This antibody was obtained by recombinant antibody (rAb) phage display recognizing SUV420H2 protein under non-denaturing conditions.
<b>Target</b>	KMT5C
<b>Preservatives</b>	PBS with 0.02% Proclin 300.
<b>Concentration</b>	batch dependent
<b>Storage</b>	Store at 4°C for up to 3 months. For longer storage, aliquot and store at -20°C.
<b>Note</b>	For research use only
<b>Isotype</b>	IgG kappa
<b>Clonality</b>	Recombinant
<b>Uniprot ID</b>	<a href="#">Q86Y97</a>
<b>Expiration Date</b>	12 months from date of receipt.



Immunofluorescence staining of fixed HEK...



Flow cytometry using the anti-SUV420H2 a...