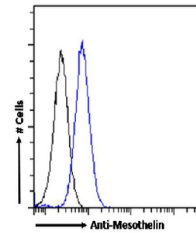


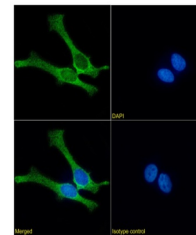
Product Datasheet

MSLN Antibody (orb1671487)

Description	MSLN Antibody
Reactivity	Human
Conjugation	Unconjugated
Tested Applications	ELISA
Immunogen	The original antibody was generated by intraperitoneally immunizing BALB/c mice with the purified recombinant mesothelin protein.
Target	MSLN
Preservatives	PBS with 0.02% Proclin 300.
Concentration	batch dependent
Storage	Store at 4°C for up to 3 months. For longer storage, aliquot and store at -20°C.
Note	For research use only
Isotype	IgG kappa
Clonality	Recombinant
Uniprot ID	Q13421
Expiration Date	12 months from date of receipt.



Flow cytometry using the Anti-Mesothelin...



Immunofluorescence staining of HeLa cell...