

---

## Product Datasheet

### CCL15 Antibody (Biotin) (orb1671449)

**Description**

CCL15 Antibody (Biotin)

**Species/Host**

Goat

**Reactivity**

Human

**Conjugation**

Biotin

**Tested**

ELISA, WB

**Applications**
**Immunogen**

Produced from sera of goats pre-immunized with highly pure (>98%) recombinant hMIP-5. Anti-Human MIP-5 specific antibody was purified by affinity chromatography and then biotinylated.

**Target**

CCL15

**Form/Appearance**

Lyophilized

**Concentration**

batch dependent

**Storage**

Antibody is stable for at least 2 years from date of receipt at -20°C. The reconstituted antibody is stable for at least two weeks at 2-8°C. Frozen aliquots are stable for at least 6 months when stored at -20°C. Avoid repeated freeze-thaw cycles.

**Note**

For research use only

**Application notes**

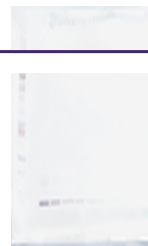
Sandwich ELISA: To detect hMIP-5 by sandwich ELISA (using 100 µl/well antibody solution) a concentration of 0.25 - 1.0 µg/ml of this antibody is required. This biotinylated polyclonal antibody, in conjunction with Biorbyt's Polyclonal Anti-Human MIP-5 as a capture antibody, allows the detection of at least 0.2 - 0.4 ng/well of recombinant hMIP-5. Western Blot To detect hMIP-5 by Western Blot analysis this antibody can be used at a concentration of 0.1 - 0.2 µg/ml. Used in conjunction with compatible secondary reagents the detection limit for recombinant hMIP-5 is 1.5 - 3.0 ng/lane, under either reducing or non-reducing conditions.

**Clonality**

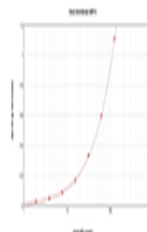
Polyclonal

**Uniprot ID**
[Q16663](#)
**NCBI**
[Q16663](#)
**Expiration Date**

12 months from date of receipt.



To detect hMIP-5 by sandwich ELISA (usin...



To detect hMIP-5 by Western Blot analysi...