
Product Datasheet

CD274 Antibody (Biotin) (orb1671420)

Description

CD274 Antibody (Biotin)

Species/Host

Rabbit

Reactivity

Human

Conjugation

Biotin

Tested

ELISA, WB

Applications
Immunogen

Produced from sera of rabbits immunized with highly pure Recombinant Human PD-L1 Fc. Anti-Human PD-L1 Fc-specific antibody was purified by affinity chromatography and then biotinylated.

Target

CD274

Form/Appearance

Lyophilized

Concentration

batch dependent

Storage

Antibody is stable for at least 2 years from date of receipt at -20°C. The reconstituted antibody is stable for at least two weeks at 2-8°C. Frozen aliquots are stable for at least 6 months when stored at -20°C. Avoid repeated freeze-thaw cycles.

Note

For research use only

Application notes

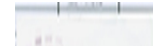
Sandwich ELISA: To detect Human PD-L1 Fc by sandwich ELISA (using 100µl/well), a concentration of 0.25-1.0 µg/ml of this antibody is required. This biotinylated polyclonal antibody, in conjunction with Biorbyt's Polyclonal Anti-Human PD-L1 Fc as a capture antibody, allows the detection of at least 2000-4000 pg/ml of Recombinant Human PD-L1 Fc. Western Blot To detect Human PD-L1 Fc by Western Blot analysis, this antibody can be used at a concentration of 0.1-0.2 µg/ml. When used in conjunction with compatible development reagents, the detection limit for Recombinant Human PD-L1 Fc is 1.5-3.0 ng/lane, under either reducing or non-reducing conditions.

Clonality

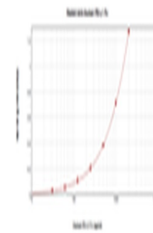
Polyclonal

Uniprot ID
[Q9NZQ7](#)
NCBI
[Q9NZQ7](#)
Expiration Date

12 months from date of receipt.



To detect Human PD-L1 Fc by sandwich ELISA...



To detect Human PD-L1 Fc by Western Blot...