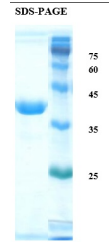


Product Datasheet

Deamidated Gliadin Peptide Antigen Recombinant Protein (orb1671221)

Description	Deamidated Gliadin Peptide Antigen Recombinant Protein
Tested Applications	CLIA, ELISA, LF, WB
Preservatives	Tris-buffered saline, pH 8.0 containing 0.1% ProClin300.
Form/Appearance	liquid
Concentration	batch dependent
Storage	Upon receipt, quick spin before open vial, aliquot and store at $\leq -20^{\circ}\text{C}$. Avoid multiple freeze/thaw cycles
Note	For research use only
Application notes	Suitable for use in ELISA, CLIA, Lateral Flow, Western Blot, and other immune tests
Purity	> 95% pure by SDS-PAGE. Ligand affinity purified.
Source	E. coli
MW	This recombinant protein contains multiple deamidated peptide of gliadin with a calculated MW of 33.2 kDa. It is recognized by positive samples in ELISA tests.
Expiration Date	6 months from date of receipt.



SDS-Page Image