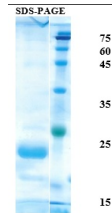


## Product Datasheet

# Interferon (IFN) alpha 2A Recombinant Protein (orb1671208)

<b>Description</b>	Interferon (IFN) alpha 2A Recombinant Protein
<b>Tested Applications</b>	CLIA, ELISA, LF, WB
<b>Preservatives</b>	PBS, pH 7.3 containing 0.1% ProClin300.
<b>Form/Appearance</b>	liquid
<b>Concentration</b>	batch dependent
<b>Storage</b>	Upon receipt, quick spin before open vial, aliquot and store at $\leq -20^{\circ}\text{C}$ . Avoid multiple freeze/thaw cycles
<b>Note</b>	For research use only
<b>Application notes</b>	Suitable for use in ELISA, CLIA, Lateral Flow, Western Blot, and other immune tests
<b>Purity</b>	> 90% pure by SDS-PAGE. Ligand affinity purified.
<b>Source</b>	E. coli
<b>MW</b>	This recombinant protein contains full length of Human IFN-alpha 2A with a MW of 20.7 kDa. It is recognized by an anti-human IFN-alpha 2A mAb from R&D systems (Cat#93452) in ELISA tests.
<b>Expiration Date</b>	6 months from date of receipt.



SDS-Page  
Image