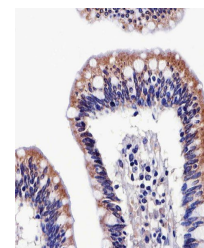
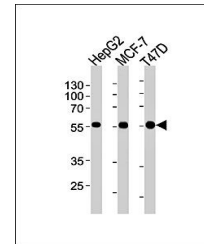


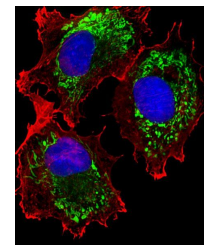
Product Datasheet

ALDH6A1 antibody (orb166955)

| | |
|----------------------------|---|
| Description | Mouse monoclonal antibody to ALDH6A1. |
| Species/Host | Mouse |
| Reactivity | Human |
| Conjugation | Unconjugated |
| Tested Applications | IF, IHC-P, WB |
| Immunogen | Recombinant Protein |
| Target | ALDH6A1 |
| Form/Appearance | Purified monoclonal antibody supplied in PBS with 0.09% (W/V) sodium azide. This antibody is purified through a protein G column, followed by dialysis against PBS. |
| Storage | Maintain refrigerated at 2-8°C for up to 2 weeks. For long term storage store at -20°C in small aliquots to prevent freeze-thaw cycles |
| Note | For research use only |
| Isotype | IgG1,IgK |
| Clonality | Monoclonal |
| MW | 57840 |
| Uniprot ID | Q02252 |
| NCBI | NP_005580.1 |
| Dilution Range | IF/ICC: 1:25, WB: 1:1000, IHC-P: 1:25 |
| Expiration Date | 12 months from date of receipt. |



Immunohistochemical analysis of formalin...



Immunofluorescence analysis of MCF-7 cel...