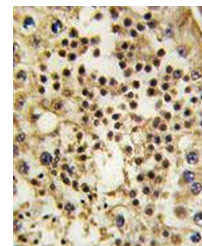
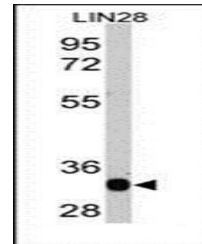


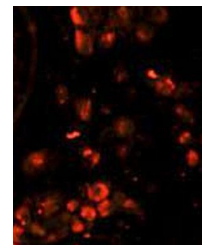
## Product Datasheet

### LIN28A antibody (orb166945)

<b>Description</b>	Mouse monoclonal antibody to LIN28A.
<b>Species/Host</b>	Mouse
<b>Reactivity</b>	Human
<b>Conjugation</b>	Unconjugated
<b>Tested Applications</b>	IF, IHC-P, WB
<b>Immunogen</b>	Recombinant Protein
<b>Target</b>	LIN28A
<b>Form/Appearance</b>	Purified polyclonal antibody supplied in PBS with 0.09% (W/V) sodium azide. This antibody is prepared by Saturated Ammonium Sulfate (SAS) precipitation followed by dialysis against PBS.
<b>Storage</b>	Maintain refrigerated at 2-8°C for up to 2 weeks. For long term storage store at -20°C in small aliquots to prevent freeze-thaw cycles
<b>Note</b>	For research use only
<b>Isotype</b>	IgG1 Kappa
<b>Clonality</b>	Monoclonal
<b>MW</b>	22743
<b>Uniprot ID</b>	<a href="#">Q9H9Z2</a>
<b>NCBI</b>	<a href="#">NP_078950.1</a>
<b>Dilution Range</b>	WB: 1:200-2000, IHC-P: 1:50-200, IF/ICC: 1:10-50
<b>Expiration Date</b>	12 months from date of receipt.



Immunohistochemical analysis of formalin...



Confocal immunofluorescence analysis of ...