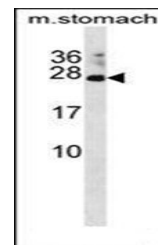
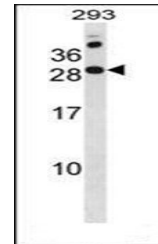


Product Datasheet

RAP2C antibody (orb166486)

Description	Rabbit polyclonal antibody to RAP2C (N-term).
Species/Host	Rabbit
Reactivity	Human, Mouse
Conjugation	Unconjugated
Tested Applications	WB
Immunogen	Synthetic Peptide
Target	RAP2C
Form/Appearance	Purified polyclonal antibody supplied in PBS with 0.09% (W/V) sodium azide. This antibody is purified through a protein A column, followed by peptide affinity purification.
Storage	Maintain refrigerated at 2-8°C for up to 2 weeks. For long term storage store at -20°C in small aliquots to prevent freeze-thaw cycles
Note	For research use only
Isotype	Rabbit IgG
Clonality	Polyclonal
MW	20745
Uniprot ID	Q9Y3L5
NCBI	NP_067006.3 , NP_001258116.1 , NP_001258115.1
Dilution Range	WB: 1:1000
Expiration Date	12 months from date of receipt.



Western blot analysis of mouse stomach t...