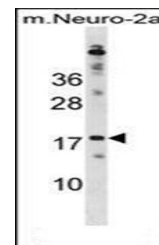
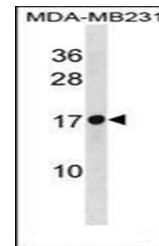


Product Datasheet

RPL30 antibody (orb166482)

| | |
|----------------------------|------------------------------------------------------------------------------------------------------------------------------------------------------------------------------|
| Description | Rabbit polyclonal antibody to RPL30 (N-term). |
| Species/Host | Rabbit |
| Reactivity | Human, Mouse |
| Conjugation | Unconjugated |
| Tested Applications | WB |
| Immunogen | Synthetic Peptide |
| Target | RPL30 |
| Form/Appearance | Purified polyclonal antibody supplied in PBS with 0.09% (W/V) sodium azide. This antibody is purified through a protein A column, followed by peptide affinity purification. |
| Storage | Maintain refrigerated at 2-8°C for up to 2 weeks. For long term storage store at -20°C in small aliquots to prevent freeze-thaw cycles |
| Note | For research use only |
| Isotype | Rabbit IgG |
| Clonality | Polyclonal |
| MW | 12784 |
| Uniprot ID | P62888 |
| NCBI | NP_000980.1 |
| Dilution Range | WB: 1:1000 |
| Expiration Date | 12 months from date of receipt. |



Western blot analysis of mouse Neuro-2a ...