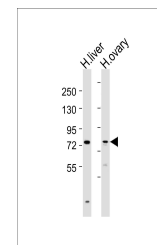
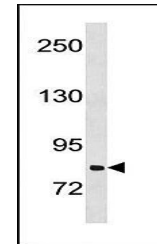


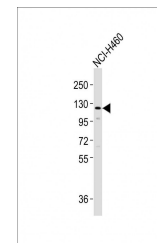
Product Datasheet

SLCO1B3 antibody (orb165886)

| | |
|----------------------------|--|
| Description | Rabbit polyclonal antibody to SLCO1B3 (C-term). |
| Species/Host | Rabbit |
| Reactivity | Human |
| Conjugation | Unconjugated |
| Tested Applications | WB |
| Immunogen | Synthetic Peptide |
| Target | SLCO1B3 |
| Form/Appearance | Purified polyclonal antibody supplied in PBS with 0.09% (W/V) sodium azide. This antibody is purified through a protein A column, followed by peptide affinity purification. |
| Storage | Maintain refrigerated at 2-8°C for up to 2 weeks. For long term storage store at -20°C in small aliquots to prevent freeze-thaw cycles |
| Note | For research use only |
| Isotype | Rabbit IgG |
| Clonality | Polyclonal |
| MW | 77403 |
| Uniprot ID | Q9NPD5 |
| NCBI | NP_062818.1 |
| Dilution Range | WB: 1:1000 |
| Expiration Date | 12 months from date of receipt. |



WB analysis of (lane 1) human liver lysa...



WB analysis of NCI-H460 whole cell lysat...