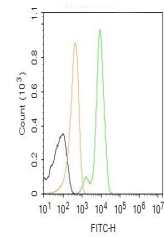


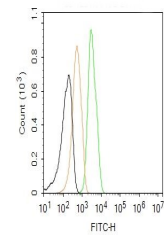
## Product Datasheet

### XIAP antibody (FITC) (orb16506)

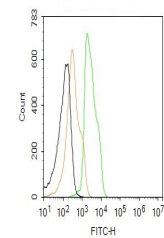
<b>Description</b>	XIAP antibody (FITC)
<b>Species/Host</b>	Rabbit
<b>Reactivity</b>	Human, Mouse, Rat
<b>Conjugation</b>	FITC
<b>Tested Applications</b>	FC, ICC, IF
<b>Immunogen</b>	KLH conjugated synthetic peptide derived from human XIAP
<b>Target</b>	XIAP/BIRC4
<b>Preservatives</b>	0.01M TBS(pH7.4) with 1% rAlbumin, 0.03% Proclin300 and 50% Glycerol.
<b>Form/Appearance</b>	Liquid
<b>Concentration</b>	1mg/ml
<b>Storage</b>	Shipped at 4°C. Store at -20 °C for one year. Avoid repeated freeze/thaw cycles.
<b>Note</b>	For research use only
<b>Isotype</b>	IgG
<b>Clonality</b>	Polyclonal
<b>Purity</b>	affinity purified by Protein A
<b>MW</b>	55 kDa
<b>Uniprot ID</b>	<b>Q60989</b>
<b>Dilution Range</b>	Flow-Cyt=3ug/Test,IF=1:100-500,ICC=1:100
<b>Expiration Date</b>	12 months from date of receipt.



Flow cytometric analysis of Molt4 cell l...



Flow cytometric analysis of Hela cell ly...



Flow cytometric analysis of MCF7 cell ly...