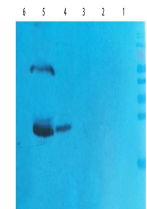


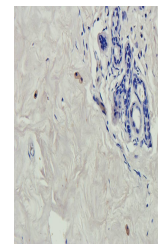
Product Datasheet

RNF4 antibody (orb163564)

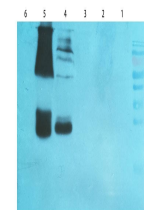
Description	RNF4 antibody
Species/Host	Rabbit
Reactivity	Human, Mouse, Rat
Conjugation	Unconjugated
Tested Applications	IHC-P, WB
Immunogen	KLH conjugated synthetic peptide derived from human RNF4. Please contact us for the exact immunogen sequence. The peptide is available as orb12944.
Target	RNF4
Form/Appearance	10 mM PBS, 0.02% sodium azide
Storage	Store at 4°C for up to two weeks. For long term storage, aliquot and store at -20°C, avoid freeze/thaw cycles.
Note	For research use only
Isotype	IgG
Clonality	Polyclonal
Purity	Polyclonal antibodies are purified by peptide affinity chromatography
MW	21 kDa
Uniprot ID	P78317
NCBI	001171939, 001171938
Dilution Range	IHC-P: 1:50-400, WB: 1:200-2000
Expiration Date	12 months from date of receipt.



Western blot analysis of mouse testis (l...



IHC-P staining of human thyroid cancer t...



WB analysis of mouse testis (lane 1), mo...