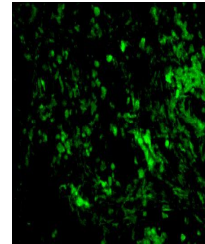


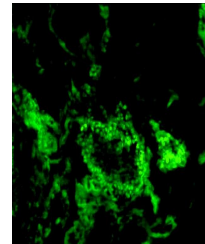
## Product Datasheet

### PTCH antibody (FITC) (orb16261)

<b>Description</b>	PTCH antibody conjugated to FITC
<b>Species/Host</b>	Rabbit
<b>Reactivity</b>	Human, Mouse
<b>Conjugation</b>	FITC
<b>Tested Applications</b>	ICC, IF
<b>Immunogen</b>	KLH conjugated synthetic peptide derived from human Patched/PTCH
<b>Target</b>	PTCH1
<b>Preservatives</b>	0.01M TBS(pH7.4) with 1% rAlbumin, 0.03% Proclin300 and 50% Glycerol.
<b>Form/Appearance</b>	Lyophilized or Liquid
<b>Concentration</b>	- 100 µg (in 100 µl): 1 mg/ml
<b>Storage</b>	Store at -20 °C for one year. Avoid repeated freeze/thaw cycles. The lyophilized antibody is stable at room temperature for at least one month and for greater than a year when kept at -20°C. When reconstituted in sterile pH 7.4 0.01M PBS or diluent of antibody the antibody is stable for at least two weeks at 2-4 °C.
<b>Note</b>	For research use only
<b>Isotype</b>	IgG
<b>Clonality</b>	Polyclonal
<b>MW</b>	161kDa
<b>Uniprot ID</b>	<a href="#">Q13635</a>
<b>Dilution Range</b>	IF=1:100-500,ICC=1:100-500
<b>Expiration Date</b>	12 months from date of receipt.



Immunohistochemical analysis of paraffin...



IHC-P of rat human breast cancer tissue  
...