
Product Datasheet

Neutrophil Elastase antibody (orb1614)

Description

Neutrophil Elastase antibody

Species/Host

Rabbit

Reactivity

Human, Mouse, Rat

Conjugation

Unconjugated

Tested

IHC-P, WB

Applications
Immunogen

KLH conjugated synthetic peptide derived from human Neutrophil Elastase. Please contact us for the exact immunogen sequence. The peptide is available as orb374811.

Target

Neutrophil Elastase. Neutrophil Elastase antibody detects endogenous levels of total Neutrophil Elastase

Form/Appearance

10 mM PBS, 0.02% sodium azide

Concentration

- 100 µg (in 200 µl): 0.5 mg/ml- 200 µg (in 400 µl): 0.5 mg/ml

Storage

Store at 4°C for up to two weeks. For long term storage, aliquot and store at -20°C, avoid freeze/thaw cycles.

Note

For research use only

Isotype

IgG

Clonality

Polyclonal

Purity

Polyclonal antibodies are purified by peptide affinity chromatography

MW

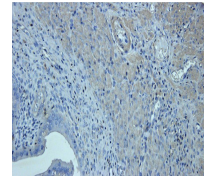
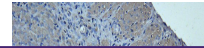
29 kDa

Uniprot ID
[Q3UP87](#), [P08246](#)
NCBI
[21](#), [001963](#), [001972](#), [11](#)
Entrez
[1991](#)
Dilution Range

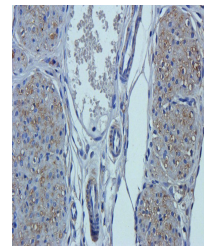
IHC-P: 1:50-500, WB: 1:100-500

Expiration Date

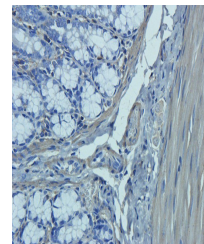
12 months from date of receipt.



IHC-P image of rat uterus tissue using a...



IHC-P image of rat uterus tissue using a...



Immunohistochemical staining of rat colo...