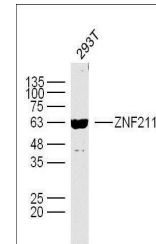


Product Datasheet

ZNF211 antibody (orb158789)

Description	ZNF211 antibody
Species/Host	Rabbit
Reactivity	Human
Conjugation	Unconjugated
Tested Applications	ELISA, ICC, IF, IHC-Fr, IHC-P, WB
Immunogen	KLH conjugated synthetic peptide derived from Human ZNF211 (51-160/564 aa)
Target	ZNF211
Preservatives	0.01M TBS(pH7.4) with 1% rAlbumin, 0.03% Proclin300 and 50% Glycerol.
Form/Appearance	Liquid
Concentration	1mg/ml
Storage	Shipped at 4°C. Store at -20 °C for one year. Avoid repeated freeze/thaw cycles.
Note	For research use only
Isotype	IgG
Clonality	Polyclonal
MW	64 kDa
Uniprot ID	Q13398
Expiration Date	12 months from date of receipt.



Western blot analysis of human 293T cell...