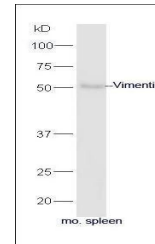


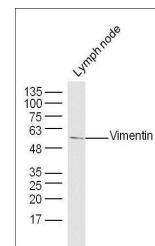
## Product Datasheet

### Vimentin antibody (orb158714)

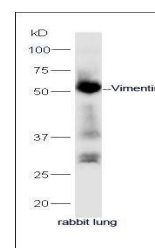
|                            |  |
|----------------------------|--|
| <b>Description</b>         | Vimentin antibody  |
| <b>Species/Host</b>        | Rabbit   |
| <b>Reactivity</b>          | Human, Mouse, Rabbit   |
| <b>Conjugation</b>         | Unconjugated   |
| <b>Tested Applications</b> | FC, ICC, IF, WB  |
| <b>Immunogen</b>           | KLH conjugated synthetic peptide derived from human Vimentin (371-466/466 aa)                  |
| <b>Target</b>              | Vimentin   |
| <b>Preservatives</b>       | 0.01M TBS(pH7.4) with 1% rAlbumin, 0.03% Proclin300 and 50% Glycerol.                          |
| <b>Form/Appearance</b>     | Liquid   |
| <b>Concentration</b>       | 1mg/ml   |
| <b>Storage</b>             | Shipped at 4°C. Store at -20 °C for one year. Avoid repeated freeze/thaw cycles.               |
| <b>Note</b>                | For research use only  |
| <b>Isotype</b>             | IgG  |
| <b>Clonality</b>           | Polyclonal   |
| <b>MW</b>                  | 51 kDa   |
| <b>CAS Number</b>          | Vimentin   |
| <b>Uniprot ID</b>          | <b>P08670</b>  |
| <b>Dilution Range</b>      | WB=1:500-2000, ICC=1:100, IF=1:100-500, Flow-Cyt=1µg/Test, IHC-F=1:100-500, ELISA=1:5000-10000 |
| <b>Expiration Date</b>     | 12 months from date of receipt.  |



Western blot analysis of mouse spleen ce...



Western blot analysis of mouse Lymph nod...



Western blot analysis of Rabbit lung lys...