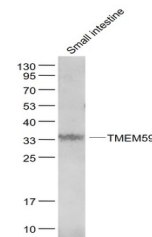


Product Datasheet

TMEM59 antibody (orb158624)

Description	TMEM59 antibody
Species/Host	Rabbit
Reactivity	Mouse
Conjugation	Unconjugated
Tested Applications	WB
Immunogen	KLH conjugated synthetic peptide derived from human TMEM59 (141-240/323 aa)
Target	TMEM59
Preservatives	0.01M TBS(pH7.4) with 1% rAlbumin, 0.03% Proclin300 and 50% Glycerol.
Form/Appearance	Liquid
Concentration	1mg/ml
Storage	Maintain refrigerated at 2-8°C for up to 2 weeks. For long term storage store at -20°C in small aliquots to prevent freeze-thaw cycles.
Note	For research use only
Isotype	IgG
Clonality	Polyclonal
MW	33 kDa
Uniprot ID	Q9BXS4
Dilution Range	WB=1:500-2000
Expiration Date	12 months from date of receipt.



Western blot: Small intestine (Mouse); Pri...