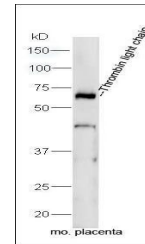


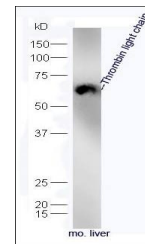
Product Datasheet

Thrombin light chain antibody (orb158601)

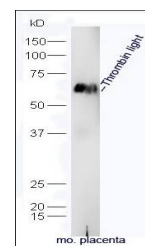
Description	Thrombin light chain antibody
Species/Host	Rabbit
Reactivity	Mouse
Conjugation	Unconjugated
Tested Applications	ELISA
Immunogen	KLH conjugated synthetic peptide derived from human Thrombin light chain (328-363/622 aa)
Target	Thrombin light chain
Preservatives	0.01M TBS(pH7.4) with 1% rAlbumin, 0.03% Proclin300 and 50% Glycerol.
Form/Appearance	Liquid
Concentration	1mg/ml
Storage	Shipped at 4°C. Store at -20 °C for one year. Avoid repeated freeze/thaw cycles.
Note	For research use only
Isotype	IgG
Clonality	Polyclonal
MW	4/64 kDa
Uniprot ID	P00734
Expiration Date	12 months from date of receipt.



Western blot analysis of extracts from p...



Western blot analysis of mouse liver lys...



Western blot analysis of mouse placenta ...