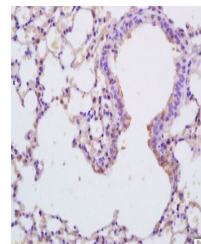


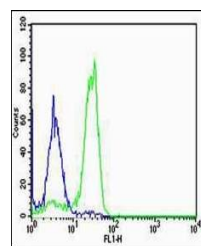
Product Datasheet

SP-C antibody (orb158476)

Description	SP-C antibody
Species/Host	Rabbit
Reactivity	Human
Conjugation	Unconjugated
Tested Applications	FC
Immunogen	KLH conjugated synthetic peptide derived from human SFTPC (24-58/197 aa)
Target	SFTPC
Preservatives	0.01M TBS(pH7.4) with 1% rAlbumin, 0.03% Proclin300 and 50% Glycerol.
Form/Appearance	Liquid
Concentration	1mg/ml
Storage	Shipped at 4°C. Store at -20 °C for one year. Avoid repeated freeze/thaw cycles.
Note	For research use only
Isotype	IgG
Clonality	Polyclonal
MW	4/21 kDa
Uniprot ID	P11686
Dilution Range	Flow-Cyt=1µg/Test
Expiration Date	12 months from date of receipt.



Immunohistochemical staining of mouse lu...



Flow cytometric analysis of NCI-H460 Cel...