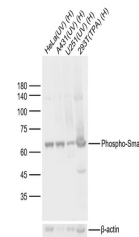


Product Datasheet

Smad1 (Phospho-Ser465) antibody (orb158427)

Description	Smad1 (Phospho-Ser465) antibody
Species/Host	Rabbit
Reactivity	Human
Conjugation	Unconjugated
Tested Applications	IHC-P, WB
Immunogen	KLH conjugated Synthesised phosphopeptide derived from human Smad1 around the phosphorylation site of Ser465 (SV(p-S)-NH ₂)
Target	Phospho-Smad1 (Ser465)
Preservatives	0.01M TBS(pH7.4) with 1% rAlbumin, 0.03% Proclin300 and 50% Glycerol.
Form/Appearance	Liquid
Concentration	1mg/ml
Storage	Maintain refrigerated at 2-8°C for up to 2 weeks. For long term storage store at -20°C in small aliquots to prevent freeze-thaw cycles.
Note	For research use only
Isotype	IgG
Clonality	Polyclonal
MW	51 kDa
Uniprot ID	Q15797
Dilution Range	WB=1:500-2000, IHC-P=1:100-500
Expiration Date	12 months from date of receipt.



Western blot: Lane 1: Human HeLa Cell(UV);...