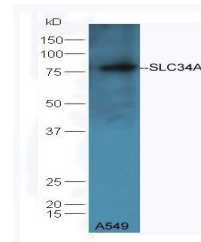


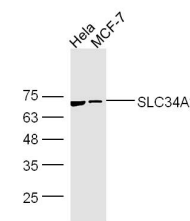
Product Datasheet

SLC34A2 antibody (orb158405)

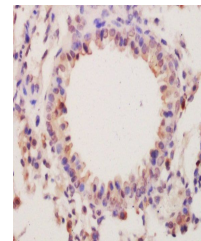
Description	SLC34A2 antibody
Species/Host	Rabbit
Conjugation	Unconjugated
Tested Applications	ELISA, ICC, IF, IHC-Fr, WB
Immunogen	KLH conjugated synthetic peptide derived from mouse SLC34A2 (265-350/697 aa)
Target	SLC34A2
Preservatives	0.01M TBS(pH7.4) with 1% rAlbumin, 0.03% Proclin300 and 50% Glycerol.
Form/Appearance	Liquid
Concentration	1mg/ml
Storage	Shipped at 4°C. Store at -20 °C for one year. Avoid repeated freeze/thaw cycles.
Note	For research use only
Isotype	IgG
Clonality	Polyclonal
MW	77 kDa
Uniprot ID	Q9DBP0
Expiration Date	12 months from date of receipt.



Western blot analysis of A549 lysates us...



Western blot analysis of extracts from H...



Immunohistochemical staining of mouse lu...