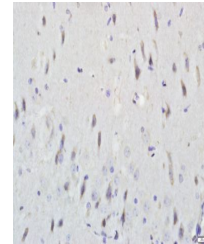


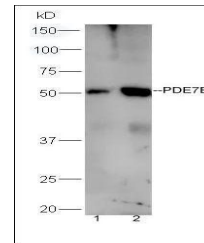
Product Datasheet

PDE7B antibody (orb158127)

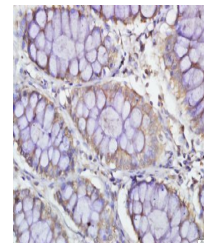
Description	PDE7B antibody
Species/Host	Rabbit
Reactivity	Mouse, Rat
Conjugation	Unconjugated
Tested Applications	FC, WB
Immunogen	KLH conjugated synthetic peptide derived from human PDE7B (281-360/450 aa)
Target	PDE7B
Preservatives	0.01M TBS(pH7.4) with 1% rAlbumin, 0.03% Proclin300 and 50% Glycerol.
Form/Appearance	Liquid
Concentration	1mg/ml
Storage	Shipped at 4°C. Store at -20 °C for one year. Avoid repeated freeze/thaw cycles.
Note	For research use only
Isotype	IgG
Clonality	Polyclonal
MW	52 kDa
Uniprot ID	Q9NP56
Dilution Range	WB=1:500-2000, Flow-Cyt=1µg/Test, IHC-P=1:100-500, IHC-F=1:100-500, ICC=1:100-500, IF=1:100-500, ELISA=1:5000-10000
Expiration Date	12 months from date of receipt.



Immunohistochemical staining of rat brain...



Western blot analysis of mouse liver lys...



Immunohistochemical staining of human CO...