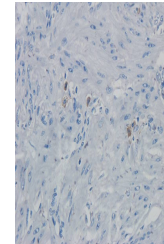


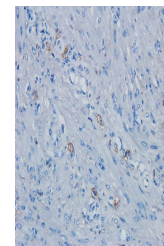
Product Datasheet

PAX6 antibody (orb158103)

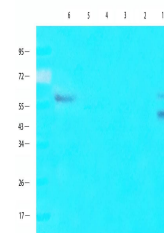
Description	PAX6 antibody
Species/Host	Rabbit
Reactivity	Human, Mouse, Rat
Conjugation	Unconjugated
Tested Applications	IHC-P, WB
Immunogen	KLH conjugated synthetic peptide derived from human PAX6. Please contact us for the exact immunogen sequence. The peptide is available as orb12943.
Target	PAX6
Form/Appearance	10 mM PBS, 0.02% sodium azide
Concentration	-100 µg (in 200 µl): 0.5 mg/ml-200 µg (in 400 µl): 0.5 mg/ml
Storage	Store at 4°C for up to two weeks. For long term storage, aliquot and store at -20°C, avoid freeze/thaw cycles.
Note	For research use only
Isotype	IgG
Clonality	Polyclonal
Purity	Polyclonal antibodies are purified by peptide affinity chromatography
MW	47 kDa
Entrez	780
Dilution Range	IHC-P: 1:50-300, WB: 1:200-1500
Expiration Date	12 months from date of receipt.



IHC-P image of human endometrial cancer ...



IHC-P staining of human endometrial cancer...



Western blot analysis of 293t cells (lan...